



EKO

NORTH COAST

CHALET



EKO guarantees amusements and entertaining through magic scenery of lagoons, welcoming clubhouse, health club and commercial zones

The project offers several unit types including villas, twin houses, chalets, duplex, and penthouses to suit our clients "second – home preferences

### Master Key Plan



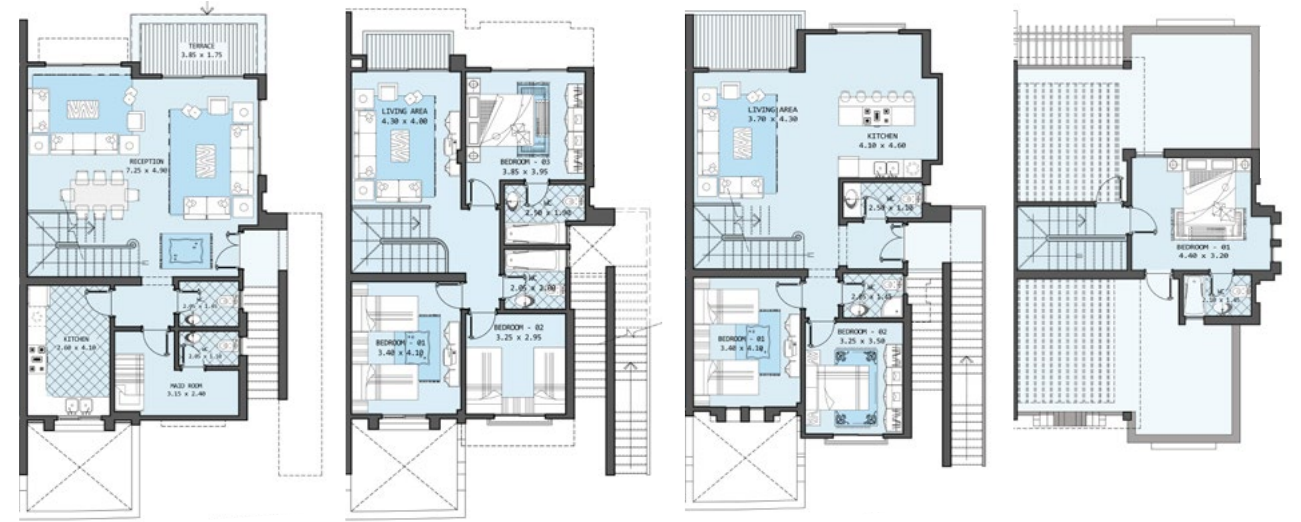
### Disclaimer

- 1- All dimensions are measured to structural elements and exclude wall finishes and construction tolerance.
- 2- Diagrams are not to scale and are for illustrative purposes only.
- 3- All renderings and landscaping visuals, materials, and facades are for illustrative purposes only .
- 4- The developer reserves the right to make non-fundamentals changes to the measurements and provided herein.
- 5-purchase price is not calculated on a price per square meter basis.
- 6- The unit orientation will be as shown in the parcel layout and not as shown in the floor plans.



# TYPE D`

## D` PLAN



Ground Floor Area 110 M<sup>2</sup>

First Floor Area 105 M<sup>2</sup>

Second Floor Area 133 M<sup>2</sup>

Roof Plan 37 M<sup>2</sup>

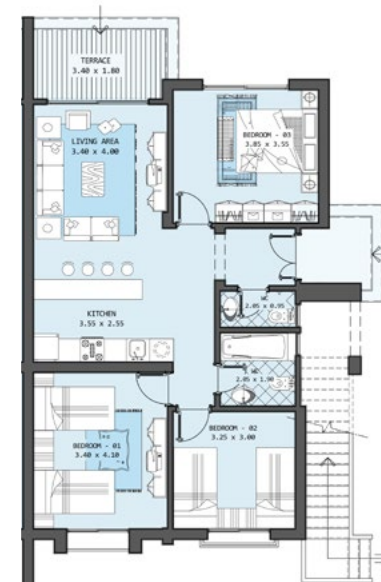
Duplex 215 M<sup>2</sup>

Penthouse 170 M<sup>2</sup>

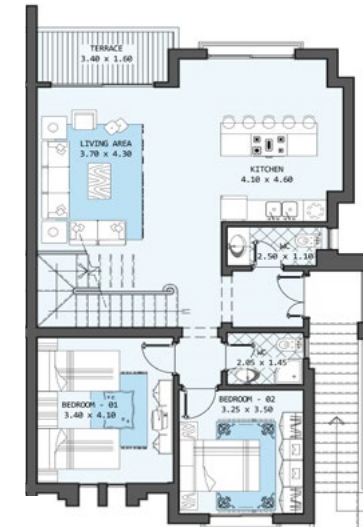
# TYPE D



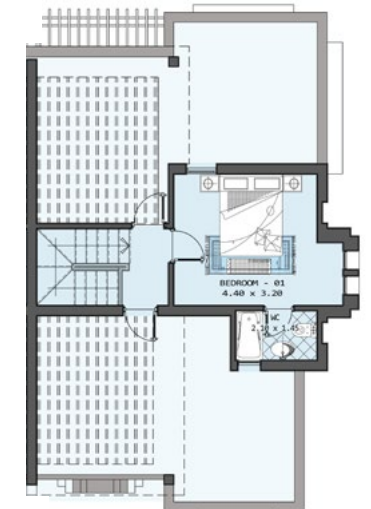
## D PLAN



Ground Plan 120 M<sup>2</sup>



First Floor Area 133 M<sup>2</sup>



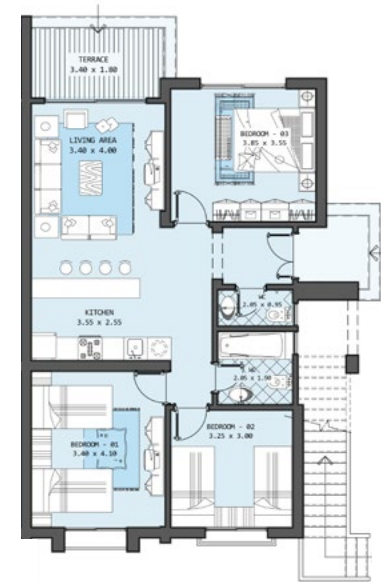
Roof Plan 37 M<sup>2</sup>

Duplex 2 170 M<sup>2</sup>

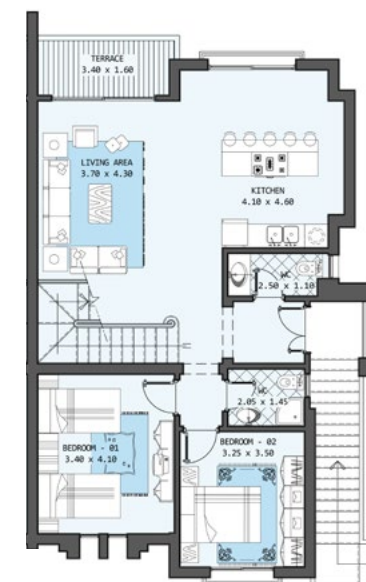
# TYPE D51-56



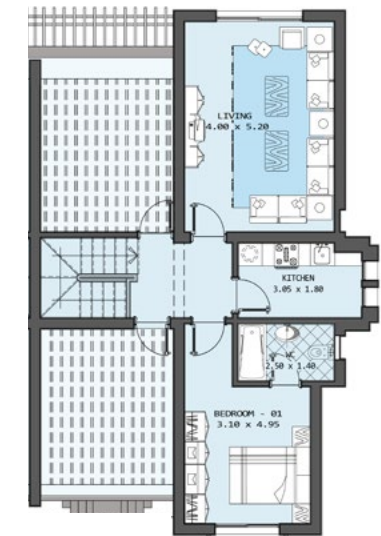
## D51-56 PLAN



Ground Plan 120 m<sup>2</sup>



First Floor Area 133 m<sup>2</sup>



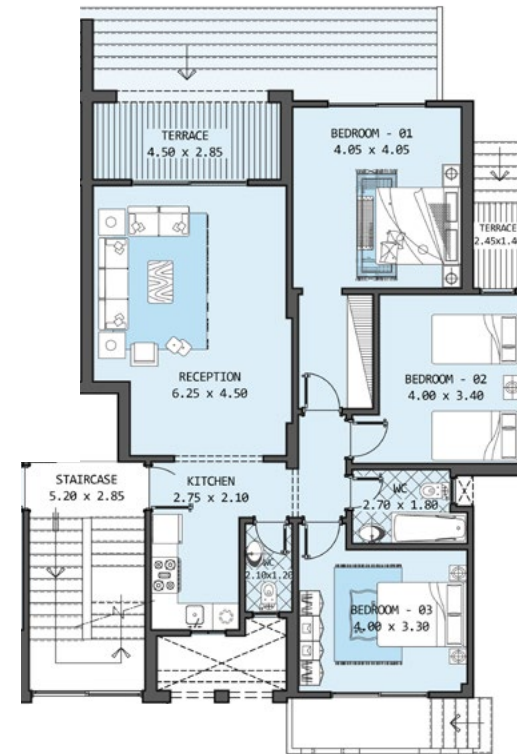
Roof Plan 76 m<sup>2</sup>

Total Area 209 m<sup>2</sup>

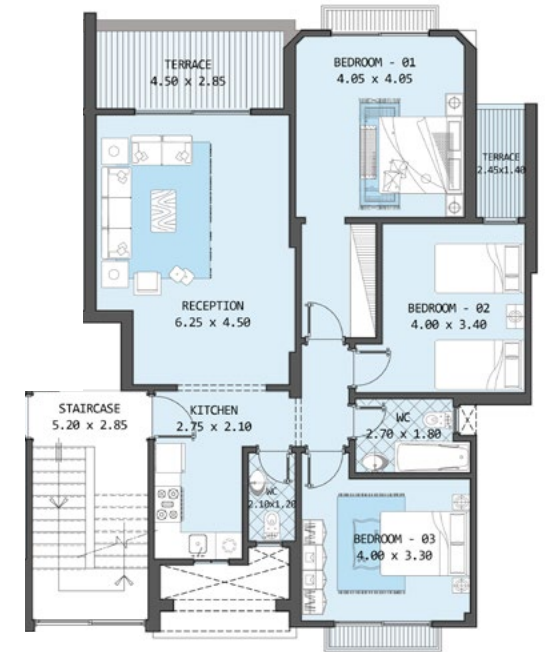
# TYPE F



## F PLAN



Ground Plan 141M<sup>2</sup>

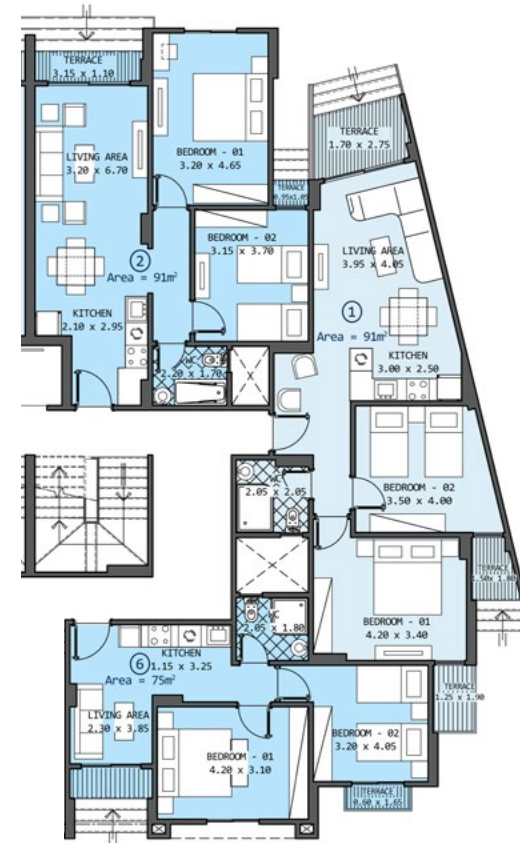


Typical Floor 141M<sup>2</sup>

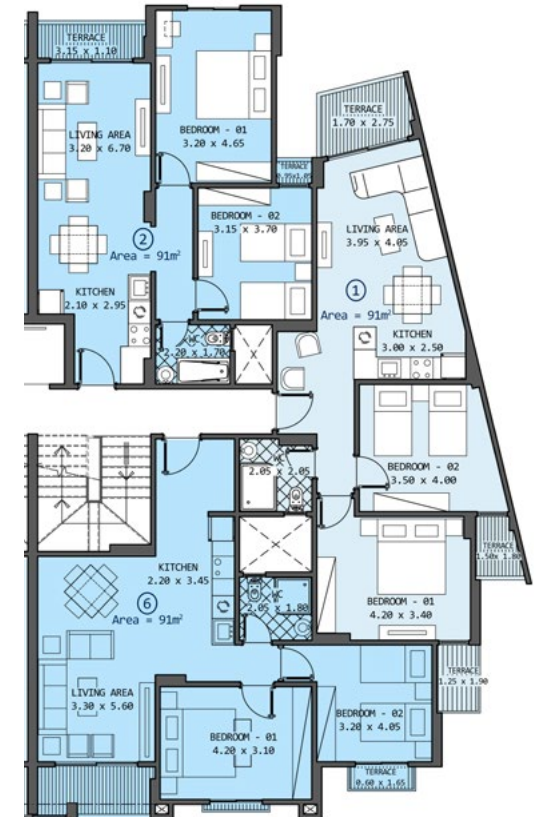
# TYPE G



## G PLAN



Ground Floor 91 & 75 m<sup>2</sup>



Typical Floor 91 m<sup>2</sup>



**MENA GROUP**  
INVESTORS AND DEVELOPERS



[www.mena-eg.com](http://www.mena-eg.com)

[info@mena-eg.com](mailto:info@mena-eg.com)

**16462**